

Roger Bruce Simon
101.2 Acres
O.R. 604, PG. 508

Sarah E. Shultz
70.08 Acres
O.R. 1401, PG. 2599

Lloyd E. Young
8 Acres
O.R. 520, PG. 808

David J. Oyster
5 Acres
O.R. 621, PG. 904

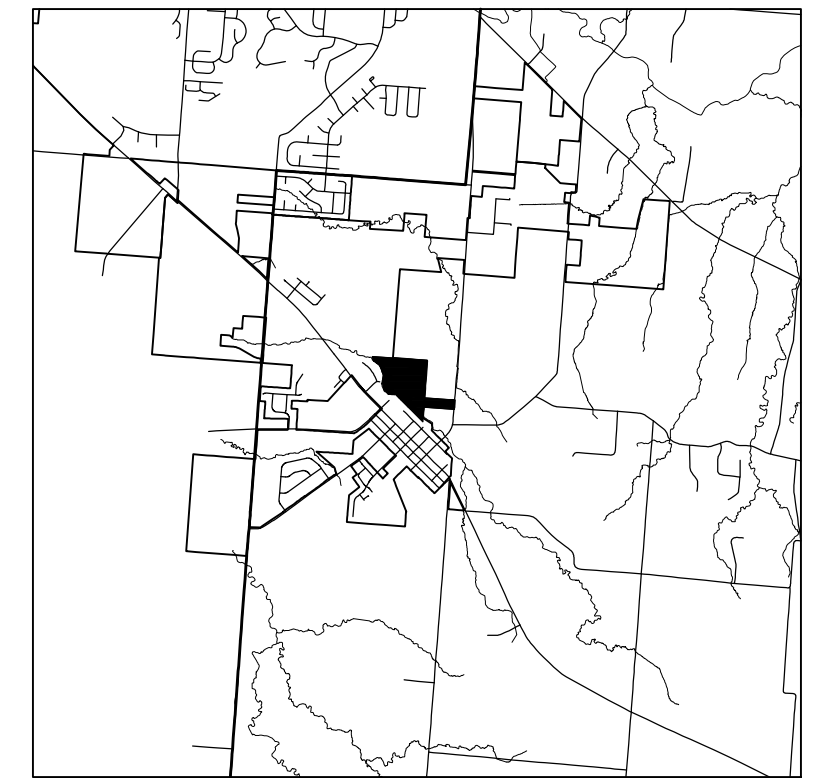
James P. Ryan
9 Acres
O.R. 1652, PG. 2153

JM Muggs LTD & Bushwood Holdings LTD
0.80 Acres
O.R. 1499, PG. 1638 (Parcel 1)

Nancy E. Wright
3 Acres
O.R. 1679, PG. 3993

Virginia A. Behrens
7.28 Acres
O.R. 686, PG. 114

Alan N. & Bonnie S. Butterbaugh
1.29 Acres



DEVELOPMENT DATA:
Current Zoning: Planned Suburban Residential

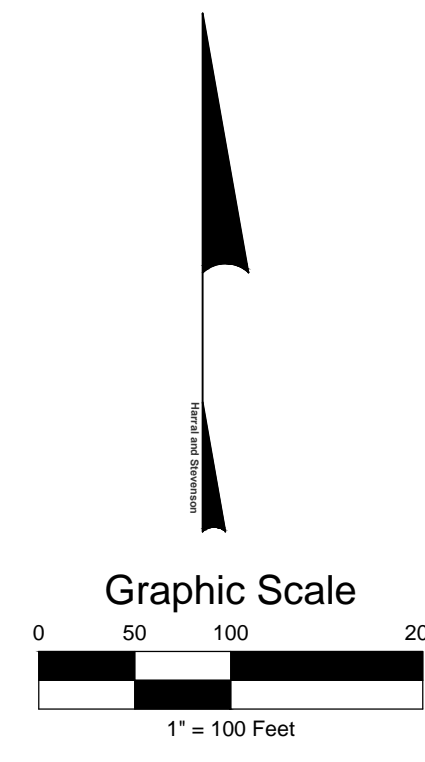
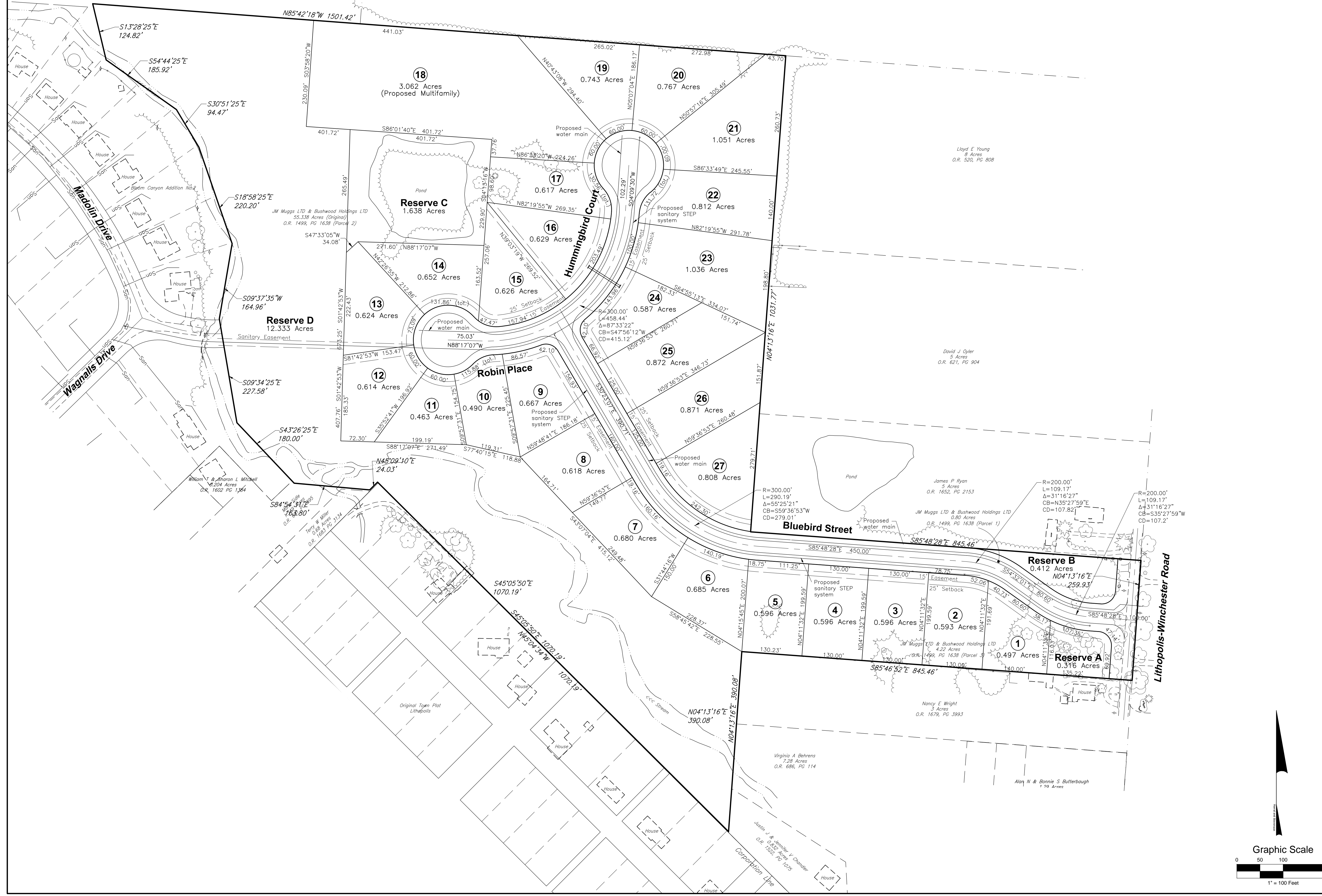
Subdivision Areas
Total: 39.391 Acres
In Lots: 20.852 Acres
In Right-of-Way: 3.840 Acres
In Reserves: 14.699 Acres (37.3%)

Proposed Street Width
Right-of-Way: 60'
Pavement: 26'

Developer:
John Rogers
5590 Waterloo Road
Lithopolis, Ohio
614-519-4006

Surveyor/Engineer:
Harral and Stevenson
120 East Main Street
Circleville, Ohio 43113
740-497-4432

CRAIG E. STEVENSON PE, PS DATE



HS Harral and Stevenson
Engineering - Surveying - Planning
120 E. Main Street, Suite A
Circleville, Ohio 43113
Ph: 740.497.4432
www.harralstevenson.com

VILLAGE OF LITHOPOLIS, FAIRFIELD COUNTY, OHIO
SECTION 7, TOWNSHIP 14N, RANGE 20W
BLUEBIRD ESTATES
PRELIMINARY PLAN

Project No: E131017	Scale: 1" = 100'
Client: Rogers	Reviewed by: CES
Date: October 22, 2015	Revised: